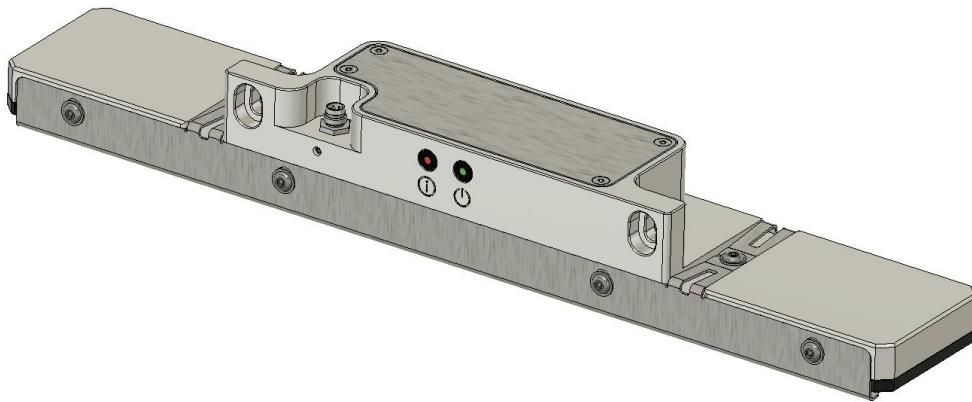


B17.2 Integrated Electrode

DATASHEET - V250427A

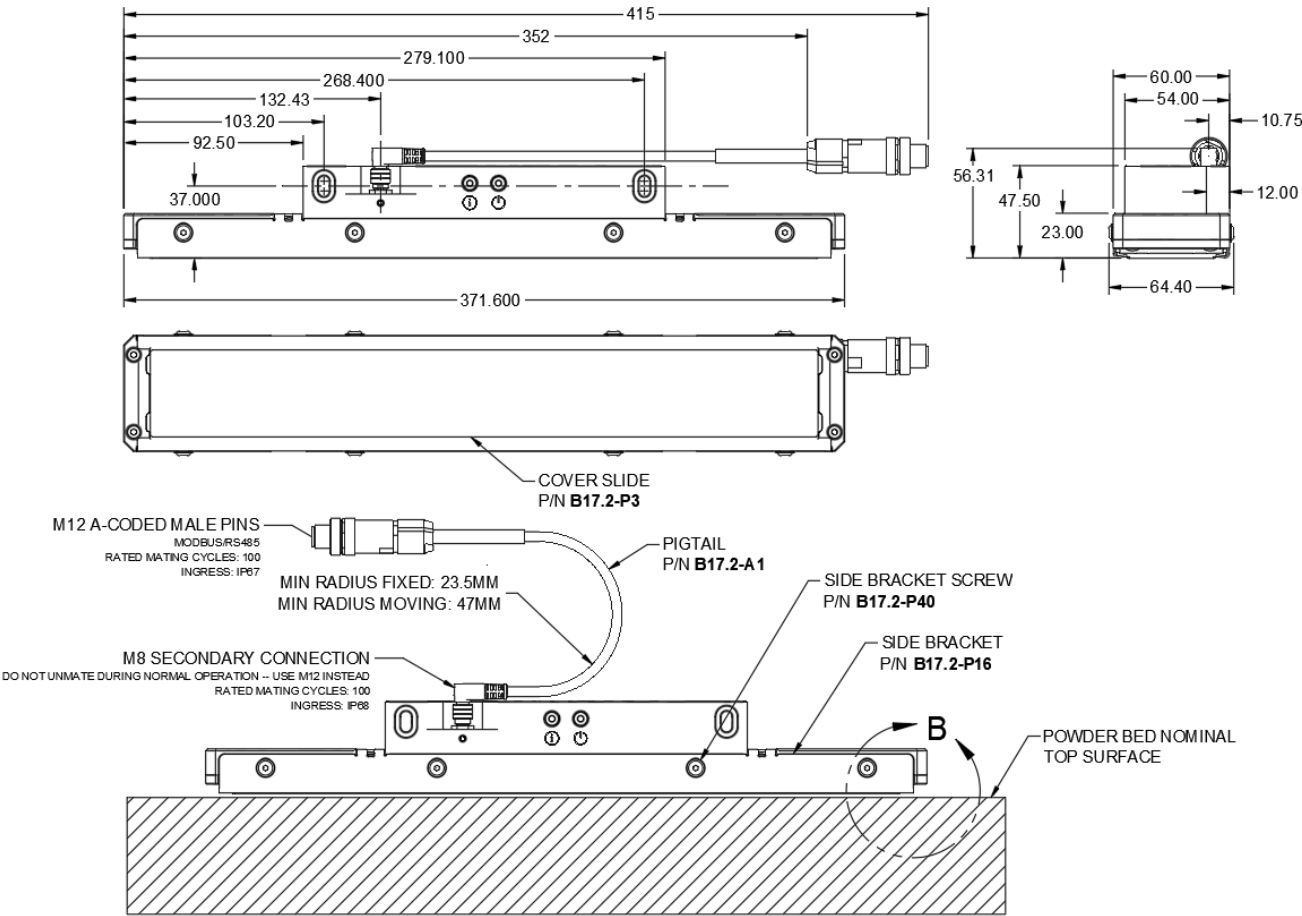
The B17.2 electrode is a 320mm x 60mm electrode for powder bed leveling and defect correction. It can correct powder bed defects approximately 5mm or smaller. The B17.2 electrode is designed to level 300mm or 12" wide powder beds in a sweeping motion up to 350mm/s (or more, with reduced performance). This electrode has an integrated controller and thus does not require a separate controller to operate.



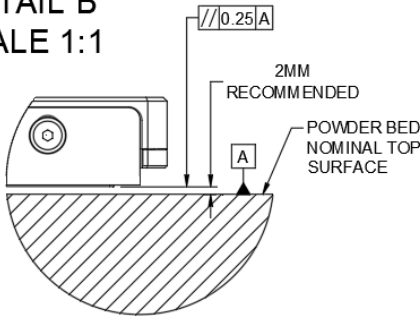
Specifications

Maximum Recommended Recoating Speed	350 mm/s
Electrode Dimensions	371.6mm x 60mm x 47.5mm
Compatible Gases	Argon, Nitrogen
Disconnect Port	Standard M8, 5-pin, B-Coded
Mean Particle Size Range	10 to 350 micron
Particle Material Volume Resistivity (Min)	1x10 ³ ohm-meter
Recommended Standoff Distance	1-3mm
Faceplate Material	Delrin, PEI, or application-specific
Frame Material	Anodized aluminum
Interface Protocol	MODBUS / RS485

Mechanical Drawing



DETAIL B
SCALE 1:1



UNITS: mm [INCHES] UNLESS OTHERWISE SPECIFIED.		POWDERMOTIONLABS	
TOLERANCES: X.X = ± 1.0 [0.04] X.XX = ± 0.25 [0.01] X.XXX = ± 0.125 [0.005] X° = ± 1°		TITLE {B17.2} B17.2	
SURFACE FINISH: Ra = 3.2um [125uin] MAX		SIZE D	REV A
BREAK/DEBURR ALL SHARP EDGES		DWG NO	
APPROVED		SCALE 1:2	WEIGHT 27716.491 g
DRAWN Connor Coward 4/20/2025			SHEET 1/1